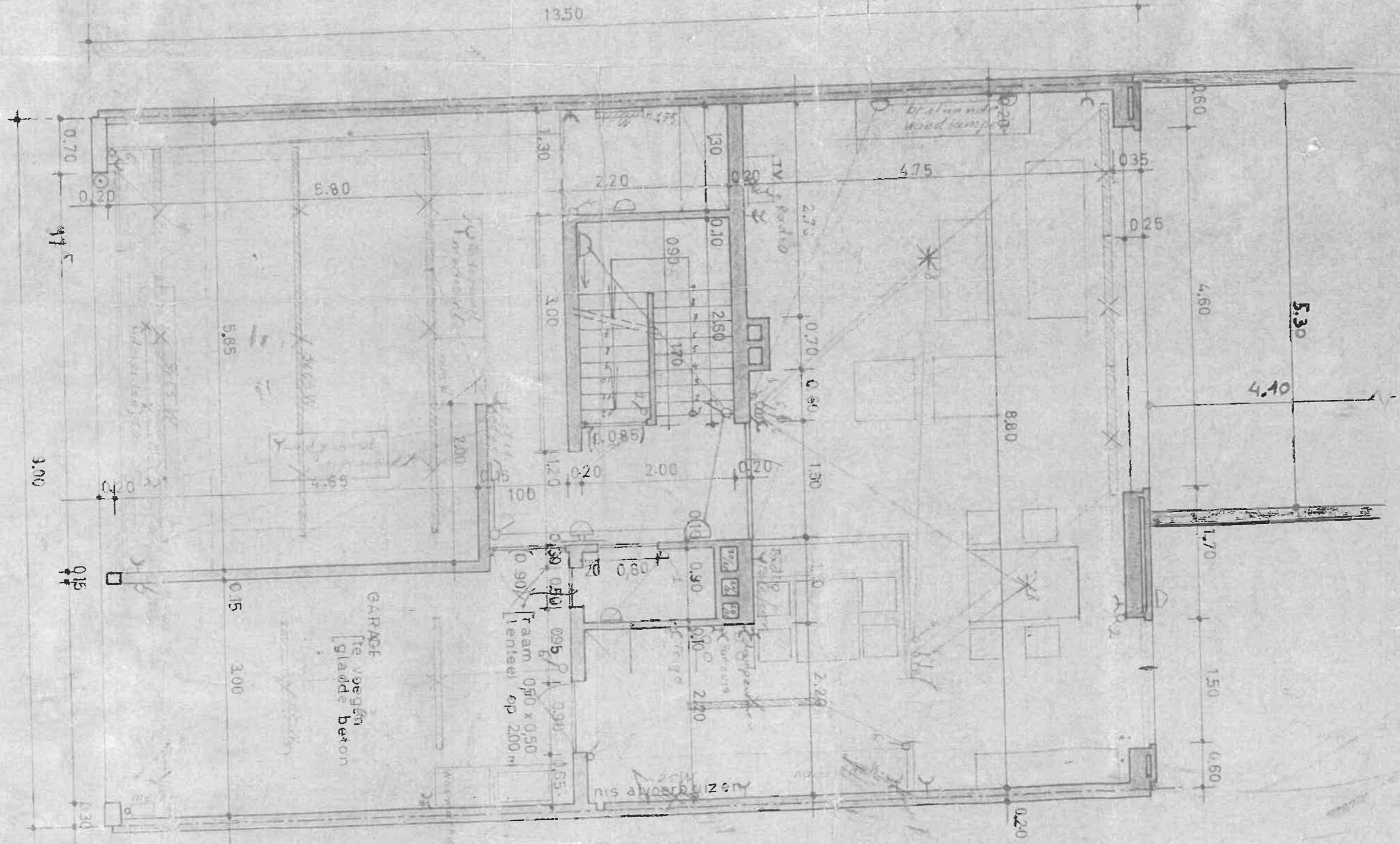
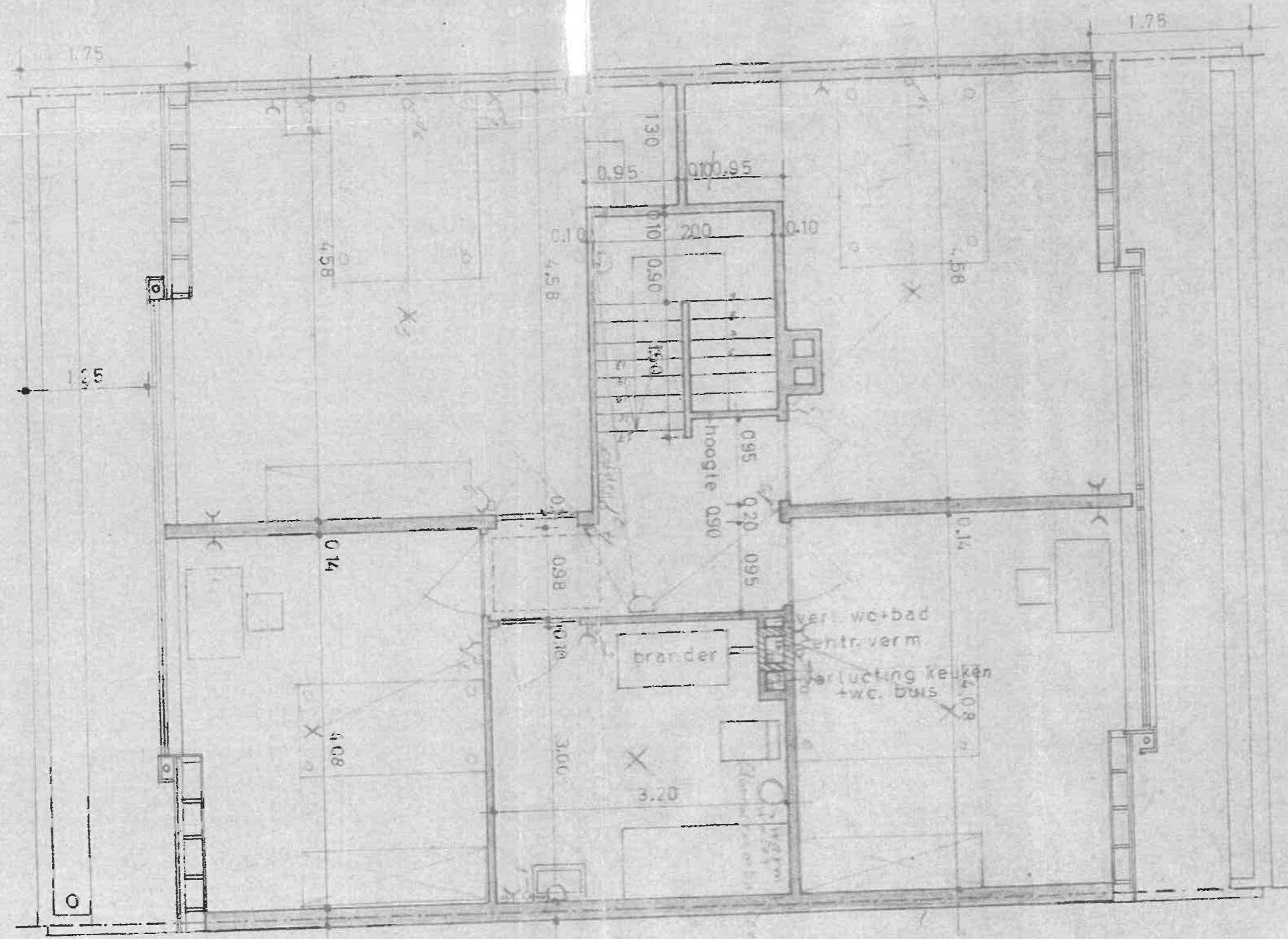


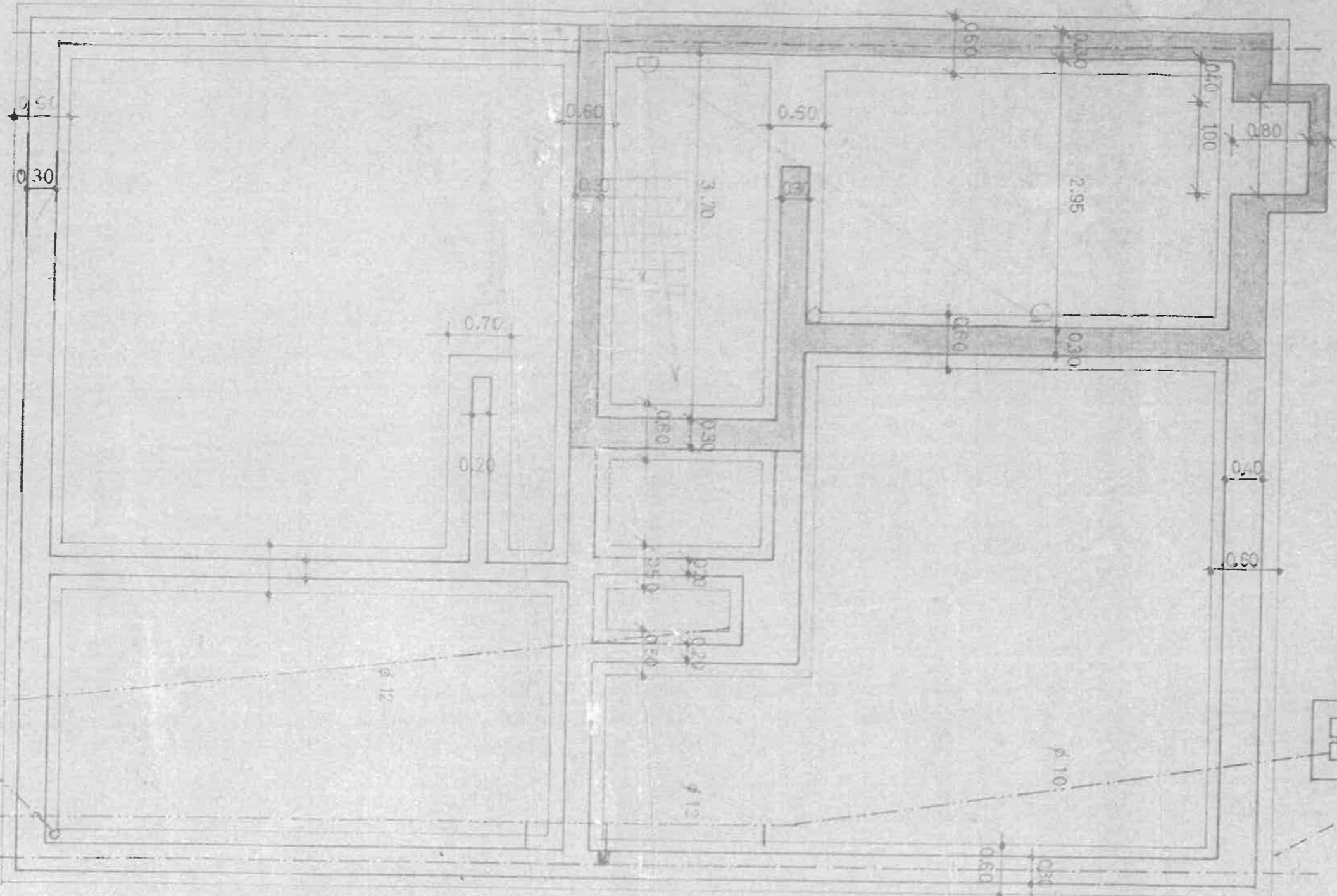
GELUKVLOERS



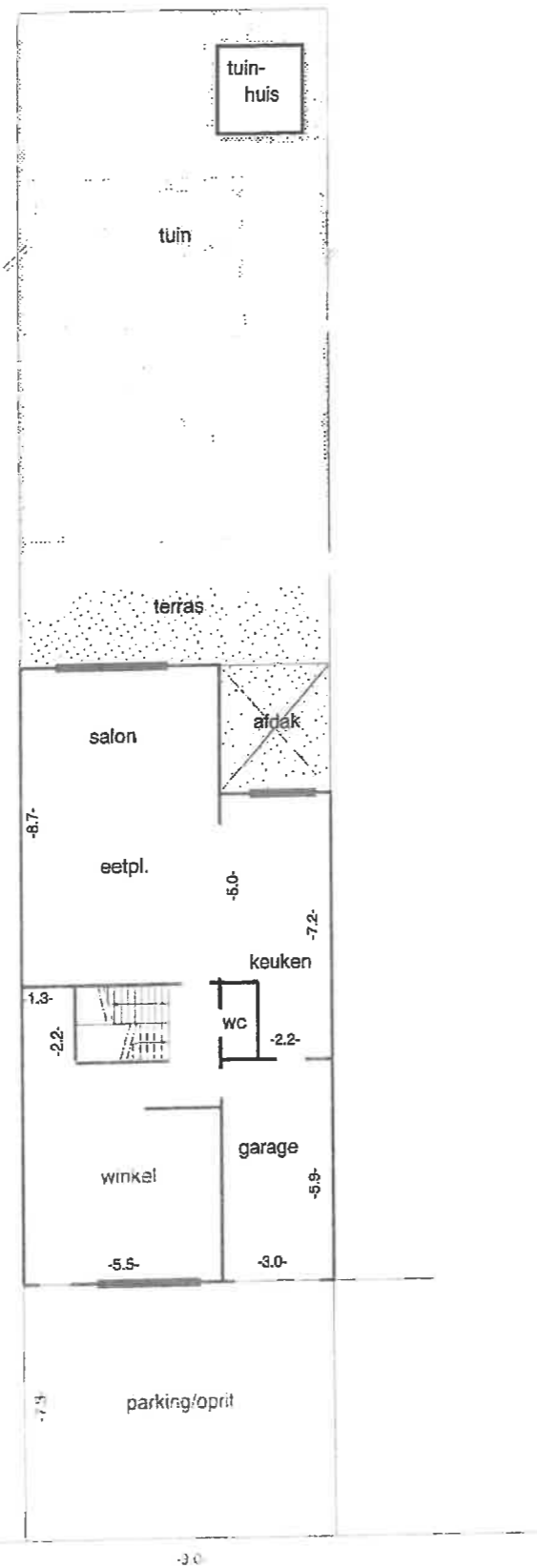
VERDIEPING



FUNDERING



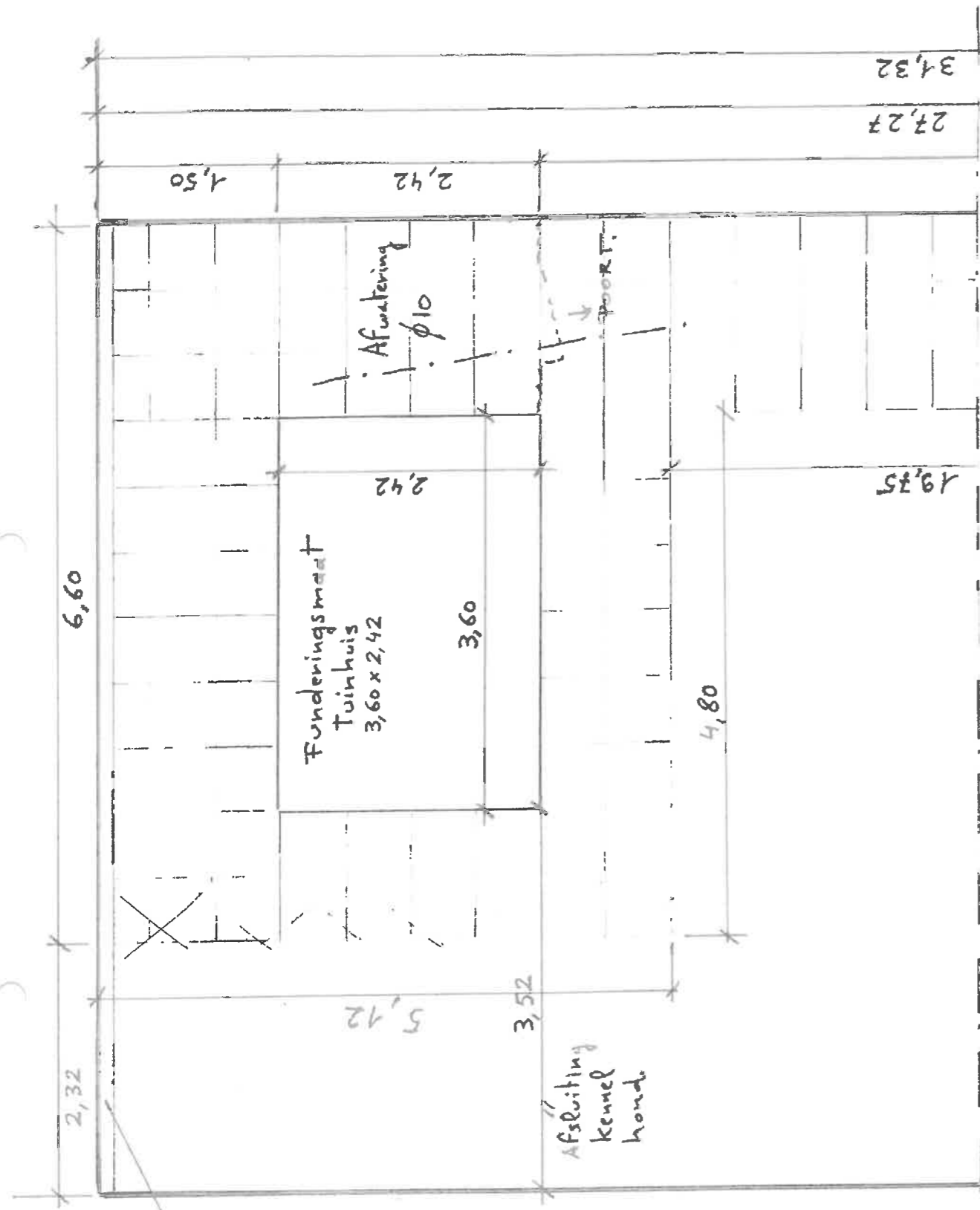
1 ciern  
5.000 L  
0.10



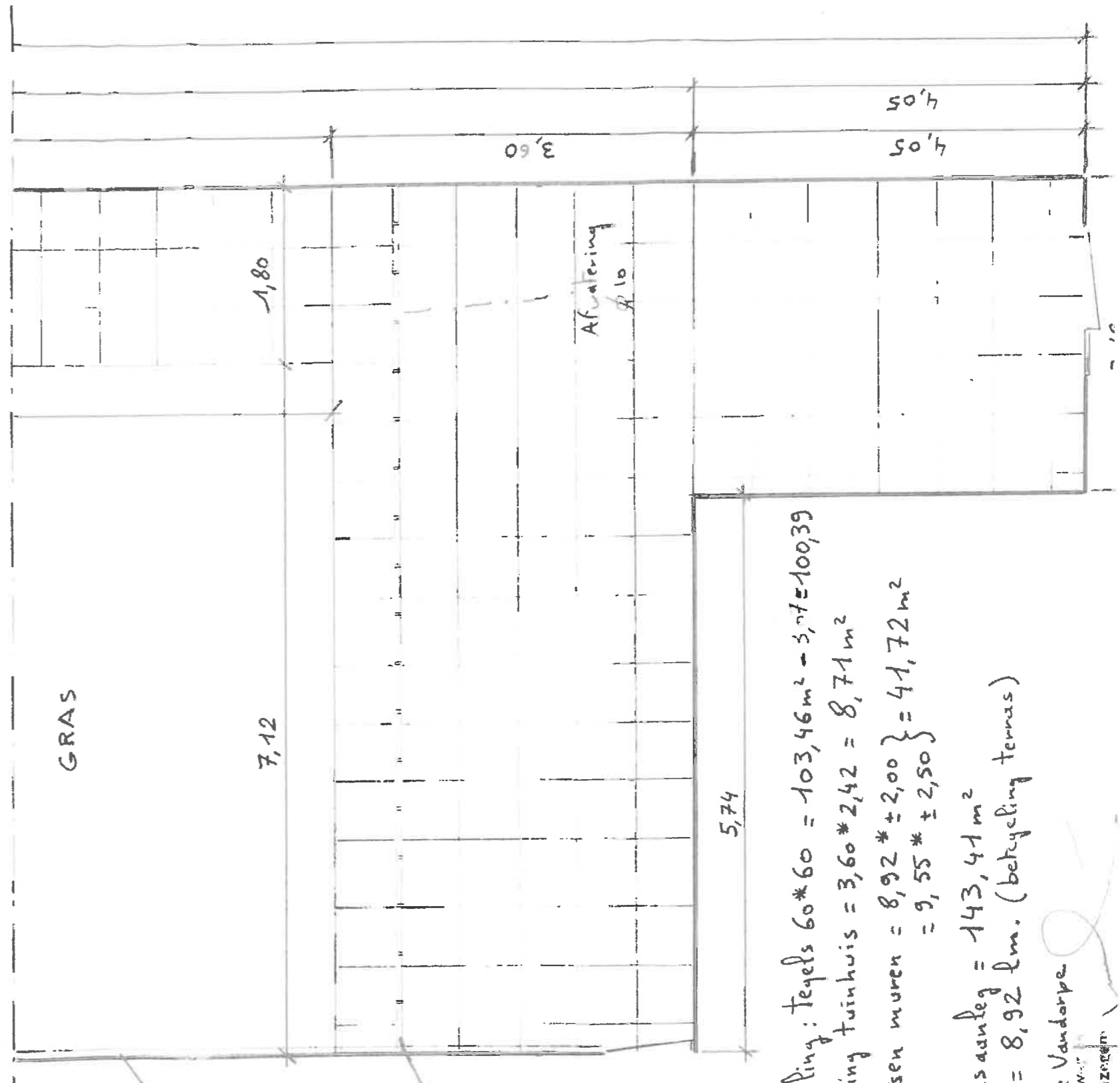
- STRAAT -

schaal 1/ 200

PAND : IZEGEM, Meensesteenweg 84



Muur  
 $h \pm 2,00m$   
 $= 8,92 \times 2,00$   
 $= 17,84m^2$



Muur  
 $h \pm 2,50m$   
 $= 9,55 \times 2,50$   
 $= 23,88m^2$

- Netto betegeling: tegels  $60 \times 60 = 103,46m^2 - 3,71 = 100,39$
- Netto fundering tuinhuis  $= 3,60 \times 2,42 = 8,71m^2$
- Netto te metsen muren  $= 8,92 \times 2,00 + 9,55 \times 2,50 = 41,72m^2$
- Netto  $m^2$  gras aanleg  $= 143,41m^2$
- Afwatering  $= 8,92 \text{ km. (betegeling terras)}$

Eddy Brul - Carine Vandorpe